

# LAMBDA

Design G. Viganò

SEDIA | CHAIR

2023



# LAMBDA

Design G. Viganò

SEDIA | CHAIR

2023

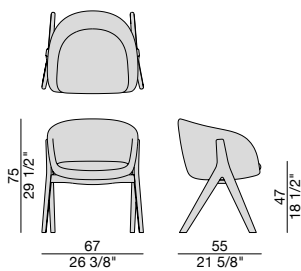
Sedia con struttura in massello di frassino o noce canaletta e rivestimento nei tessuti della collezione. Cuscino seduta sfoderabile.

Chair with frame in solid ash or canaletta walnut and cover in the fabrics of the collection. Seat cushion with removable cover.

Stuhl mit Gestell aus massiver Esche oder Nussbaum-Canaletta und Bezug aus den Stoffen der Kollektion. Sitzkissen mit abnehmbarem Bezug.

Chaise avec structure en frêne ou noyer canaletta massif et revêtement dans les tissus de la collection. Coussin d'assise déhoussable.

Silla con estructura de fresno macizo o nogal canaletta y revestimiento en las telas de la colección. Revestimiento del cojin de asiento desenfundable.



# LAMBDA

Design G. Viganò

SEDIA | CHAIR

2023



## Essenze | Wood



Noce canaletta  
*Canaletta walnut*

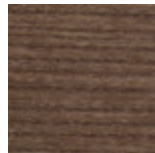
## Essenze | Wood



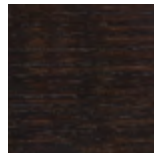
Frassino naturale  
*Natural ash*



Frassino  
tinto canapa  
*Ash canapa stained*



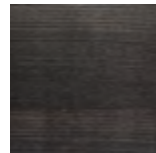
Frassino  
tinto noce canaletta  
*Ash canaletta walnut  
stained*



Frassino  
tinto moka  
*Ash moka stained*



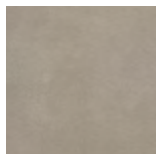
Frassino  
tinto wengè  
*Ash wengè stained*



Frassino  
tinto grigio  
*Ash grey stained*

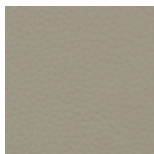
## Pelle | Leather

Cat. LUX



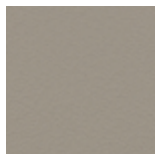
Nabuk

Cat. PLUS



Pelle PLUS

Cat. EXTRA



Pelle EXTRA

Cat. PELLE



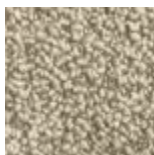
Pelle

## Rivestimento | Cover

Cat. A

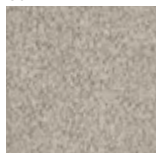


Twist

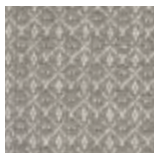


Zante

Cat. B



Bouclage



Motley



Tammy



Rabat

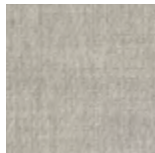
Cat. C



Armam



Ikat



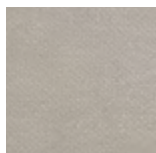
Lint



Loom



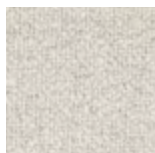
Madras



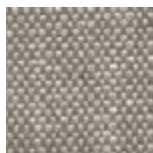
Moleskin



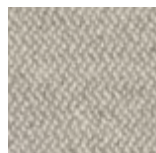
Moran



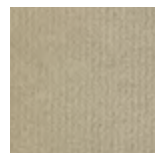
Patch



Silesia

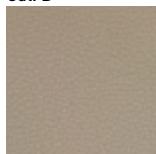


Serge

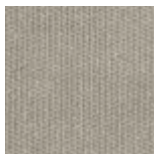


Velvet

Cat. D



Paros  
eco leather



Range

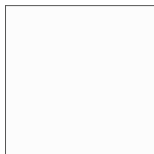


Tress

Cat. E



Dorian



In Bianco/Calico

Cat. COM

Disponibile con tessuto fornito dal cliente.

Available with fabric supplied by the customer.

Verfügbar mit Kundenstoff.

Disponibile avec tissu du client.

Disponibile con tela suministrada por el cliente.