

MOLLY

Design Meneghello Paoletti

SEDIA | CHAIR

2023



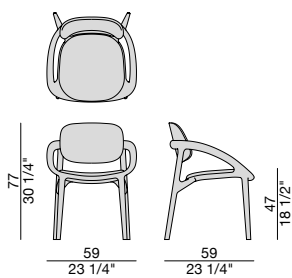
Sedia con braccioli con struttura in massello di noce canaletta e rivestimento nei tessuti della collezione.

Chair with armrests with frame in solid canaletta walnut and cover in the fabrics of the collection.

Stuhl mit Armlehnen mit Gestell aus massivem Nussbaum-Canaletta und Bezug aus dem Stoff der Kollektion.

Chaise avec accoudoirs avec structure en noyer canaletta massif et revêtement dans les tissus de la collection.

Silla con brazos con estructura de nogal canaletta macizo y revestimiento en las telas de la colección.



MOLLY

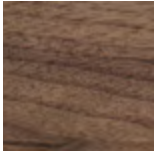
Design Meneghello Paoletti

SEDIA | CHAIR

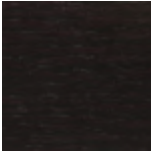
2023



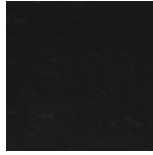
Essenze | Wood



Noce canaletta
Canaletta walnut



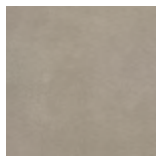
Noce canaletta
tinto moka
*Canaletta walnut
moka stained*



Noce canaletta
tinto wengè
*Canaletta walnut
wengè stained*

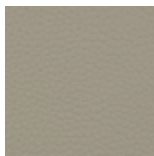
Pelle | Leather

Cat. LUX



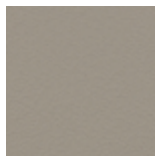
Nabuk

Cat. PLUS



Pelle PLUS

Cat. EXTRA



Pelle EXTRA

Cat. PELLE



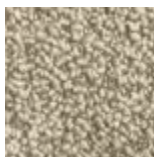
Pelle

Rivestimento | Cover

Cat. A

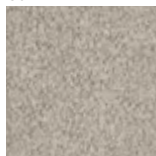


Twist

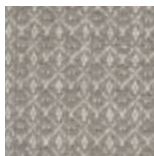


Zante

Cat. B



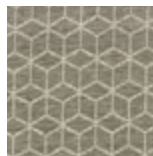
Bouclage



Motley



Tammy



Rabat

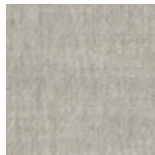
Cat. C



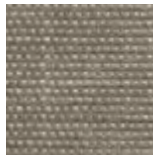
Armam



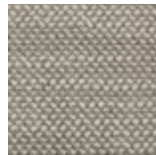
Ikat



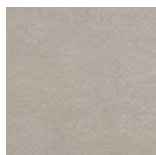
Lint



Loom



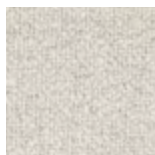
Madras



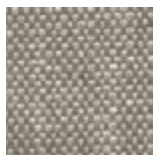
Moleskin



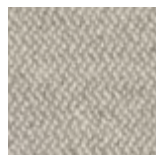
Moran



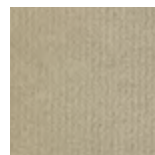
Patch



Silesia

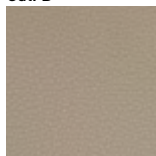


Serge



Velvet

Cat. D



Paros
eco leather



Range

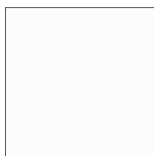


Tress

Cat. E



Dorian



In Bianco/Calico

Cat. COM

Disponibile con tessuto fornito dal cliente.

Available with fabric supplied by the customer.

Verfügbar mit Kundenstoff.

Disponibile avec tissu du client.

Disponibile con tela suministrada por el cliente.