



Stay, 909/PL
poltrona \ armchair

Stay, sia in versione poltrona che divanetto, è una seduta dai richiami anni '50, con una struttura essenziale in tubolare di metallo. Il rigore del disegno è bilanciato dal profilo morbido dello schienale e della seduta, elementi che sembrano galleggiare liberamente all'interno della struttura, svincolati tra loro sia funzionalmente che visivamente.

Stay, in both the armchair and sofa versions, is a seat with references to the 1950s, with an essential tubular metal structure. The rigor of the design is balanced by the soft profile of the backrest and seat, elements that seem to float freely within the structure, disconnected from each other both functionally and visually.

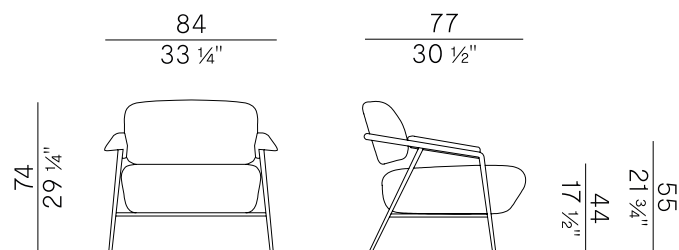
Informazioni tecniche \ Technical information

Descrizione tecnica \ Technical description

Poltrona con seduta e schienale imbottiti in poliuretano espanso ignifugo. Struttura in tubolare di metallo verniciato antracite goffrato o ottone brunito. Finiture e rivestimenti di collezione.

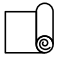

Armchair with seat and backrest padded in fire retardant polyurethane foam. Structure in metal rod, in bronzed brass or anthracite embossed painted metal finishes. Finishes and coverings as per collection.

Dimensioni \ Dimensions

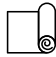



Consumi stoffe \ Fabric and leather requirements

FABRIC / LEATHER REQUIREMENTS

	x1	x2
 H 140	ml 1,90	ml 3,80
 LEATHER	m ² 3,80	

FABRIC / LEATHER REQUIREMENTS

	x1	x2
 H 55 1/4"	yd 2,10	yd 4,20
 LEATHER	ft ² 41	



PACKAGING

1 x box = m³ 0.58
gross weight - Kg 23

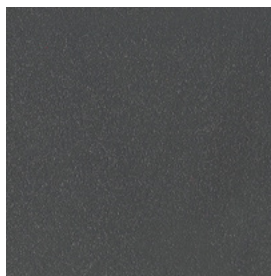
Finiture \ Finishes

Finiture struttura \
Frame finishes

Metallo \ Metal 



Ottone brunito \
Bronzed brass



Antracite goffrato \
Anthracite embossed

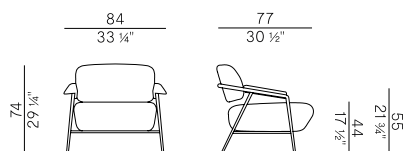
Rivestimenti \
Coverings

Tessuto, finta pelle, pelle \ Fabric, faux leather, leather

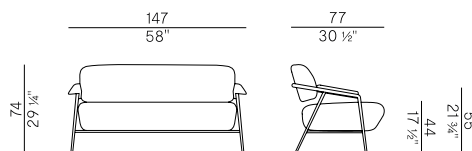
Collezione Stay \
Stay collection

Poltrona e divano con seduta e schienale imbottiti in poliuretano espanso ignifugo. Struttura in tubolare di metallo verniciato antracite goffrato o ottone brunito. Finiture e rivestimenti di collezione.

Armchair and sofa with seat and backrest padded in fire retardant polyurethane foam. Structure in metal rod, in bronzed brass or anthracite embossed painted metal finishes. Finishes and coverings as per collection.



909/PL
poltrona \ armchair



909/D
divano \ sofa