



Track, 919/L
sedia lounge \ lounge chair

Riprendendo le tipiche sezioni della lavorazione del legno degli anni '50, Track presenta una struttura in frassino o noce Canaletto a forma di "y" rovesciata. Dalle dimensioni generose, questa sedia lounge è pensata per un angolo relax, così come in una camera da letto grazie a una seduta e schienale caratterizzati da una confortevole imbottitura. Una proposta dalla presenza importante che imprime un segno molto forte all'ambiente in cui è inserita.

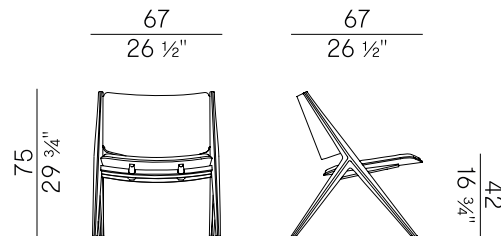
Recalling the typical woodworking sections of the 1950s, Track has a structure in ash wood or Canaletto walnut in the shape of an inverted "y". This lounge chair, with generous dimensions, is thought for a relaxing space or for a bedroom, thanks to its comfortable seat and backrest padding. A proposal with an important presence that gives a very strong mark to the environment in which is inserted.

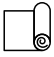
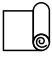


Informazioni tecniche \ Technical information

Descrizione tecnica \
Technical description

Sedia lounge in frassino o noce Canaletto con schienale e seduta imbottiti in poliuretano espanso ignifugo. Finiture e rivestimenti di collezione.

Lounge chair with ash wood or Canaletto walnut frame and seat and backrest padded in fire retardant polyurethane foam. Materials and coverings as per collection.

Dimensioni \
DimensionsConsumi stoffe \
Fabric and leather requirements

FABRIC / LEATHER REQUIREMENTS				FABRIC / LEATHER REQUIREMENTS			
		x1	x2			x1	x2
	H 140	ml 0,75	ml 1,50		H 140	yd 0,85	yd 1,65
	LEATHER	m ² 1,70			LEATHER	ft ² 18	



PACKAGING

1 x box = m³ 0.42
gross weight - Kg 15

Finiture \ Finishes

Finiture base \
Base finishes

Frassino \ Ash 



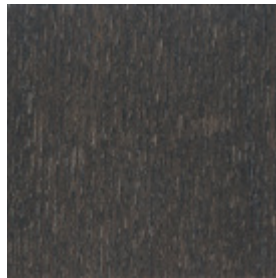
SG
Anilina beige \
Beige aniline



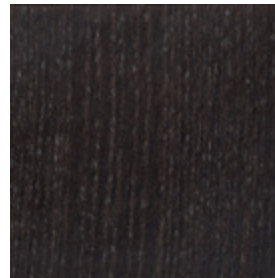
SC
Biscotto \
Biscuit



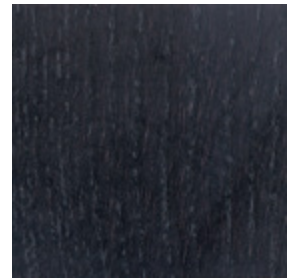
HJ
Moka \
Moka



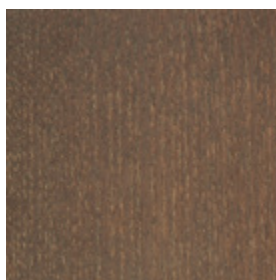
HK
Grigio plumbeo \
Dark grey



HL
Wengé \
Wengé



HP
Carbone \
Carbon



SN
Noce \
Walnut

Rivestimenti \
Coverings

Tessuto, finta pelle, pelle \ Fabric, faux leather, leather