



## Ropu, 888/CQR pouf \ pouf

Dalle ispirazioni esotiche, Ropu si distingue per la bordatura intrecciata a mano in cordino di cuoio e cordino "Gassa", che corre lungo il perimetro creando una cornice per top in marmo, vetro temperato retro verniciato, grès porcellanato e hpl oppure soffici cuscini con profili a coda di topo. Con base a quattro gambe in metallo, la collezione è disponibile nella versione tavolino basso, con piano ovaloide, alto, con piano tondo, e pouf ovaloide, da abbinare in libere composizioni. Ropu è disponibile anche nella versione outdoor.

With exotic inspirations, Ropu stands out for its hand-woven edging in hide leather rope and "Gassa" rope, which runs along the perimeter creating a frame for marble, tempered backpainted glass, laminated porcelain and hpl tops or soft cushions with mousetail cord profiles. With a four-legged metal base, the collection is available in the low coffee table version, with ovaloid top, high, with round top, and ovaloid pouf, to be combined in free compositions. Ropu is also available in the outdoor version.

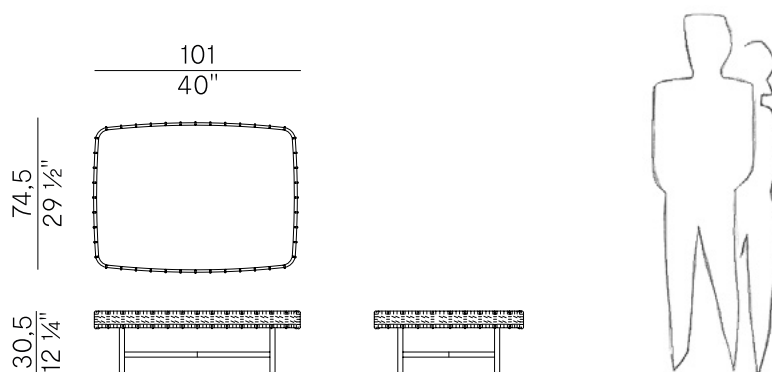
## Informazioni tecniche \ Technical information

### Descrizione tecnica \ Technical description

Pouf rettangolare con struttura in metallo verniciato antracite goffrato e cornice con intreccio in cordino di cuoio o in cordino "Gassa" testa di moro. Cuscino sfoderabile imbottito in poliuretano espanso ignifugo.

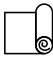

Rectangular pouf with structure in embossed anthracite painted metal and frame woven in hide leather rope or "Gassa" rope, in dark brown finish. Removable cushion padded in fire retardant polyurethane foam.

### Dimensioni \ Dimensions

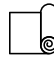



### Consumi stoffe \ Fabric and leather requirements

#### FABRIC / LEATHER REQUIREMENTS

	x1	x2
 <b>H 140</b>	ml 2.00	ml 4.00
 <b>LEATHER</b>	m <sup>2</sup> 3.00	

#### FABRIC / LEATHER REQUIREMENTS

	x1	x2
 <b>H 140</b>	ml 2.00	ml 4.00
 <b>LEATHER</b>	m <sup>2</sup> 3.00	



#### PACKAGING

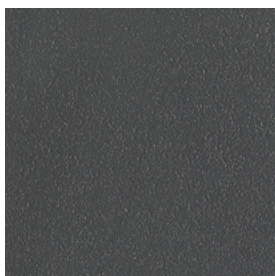
1 x box = m<sup>3</sup> 0.40  
gross weight - Kg 22

## Finiture \ Finishes

---

Finiture base \  
Base finishes

Metallo \ Metal  



Verniciato antracite  
goffrato \  
Anthracite Embossed  
Lacquered

Finiture intreccio \  
Weaving finishes

Cordino \ Rope



F7E  
Gassa Testa di Moro \  
Gassa Dark Brown

A6C  
Cuoio \  
Hide Leather

Rivestimenti \  
Coverings

Tessuto, finta pelle, pelle \ Fabric, faux leather, leather

Collezione Ropu \  
Ropu collection

Collezione di tavolini e pouf con struttura in tubo e tondino d'acciaio verniciato antracite goffrato e cornice intrecciata a mano in cordino Cuioio o "Gassa" testa di moro.

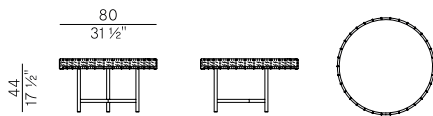
La collezione è così composta:

- Tavolino con top ovoide in vetro retro verniciato nero temperato, grès porcellanato ossido nero, HPL antracite o marmo.
  - Tavolino con top circolare in vetro retro verniciato nero temperato, grès porcellanato ossido nero, HPL antracite o marmo.
  - Pouf ovoide con cuscino sfoderabile imbottito in poliuretano espanso ignifugo.
- Finiture di collezione.

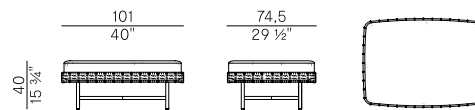
Collection of coffee tables and pouf with structure in metal tube and embossed anthracite painted steel rod and hand-woven frame in hide leather rope or "Gassa" dark brown rope.

The collection is composed as follows:

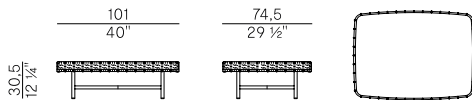
- Coffee table with ovaloid top in tempered black back-painted glass, black oxide laminated porcelain, anthracite HPL or marble.
  - Coffee table with circular top in tempered black back-painted glass, black oxide laminated porcelain, anthracite HPL or marble.
  - Ovaloid pouf with removable cushion covering, padded in fire retardant polyurethane foam.
- Finishes as per collection.



888/TBC  
tavolino \ coffee table



888/TBR  
tavolino \ coffee table



888/CQR  
pouf \ pouf