

Design Gabriele e Oscar Buratti



OTX, 887/TGC  
tavolo dining \ dining table

Versatili e dal design essenziale i tavoli OTX con gamba centrale e quattro piedini, sono caratterizzati da un piano reclinabile verticalmente in HPL, circolare o quadrato in dimensioni differenti, per poterli accostare uno accanto all'altro. Estremamente funzionali, sono inoltre proposti in tre altezze per diversi utilizzi: da spazi collettivi a bar, da giardini a terrazze. OTX è inoltre proposto nella versione dining Ø128 e Ø158cm, con base in metallo verniciata e piano sempre in HPL.

Versatile and with an essential design, the OTX tables with a central leg and four feet, are characterized by a vertically reclining top in HPL, round or square in different sizes, that makes them placeable side by side. Extremely functional, they are also proposed in three heights for different uses: from collective spaces to bars, from gardens to terraces. OTX it is also proposed in the dining version, Ø128 and Ø158cm, with a painted metal base and HPL top.

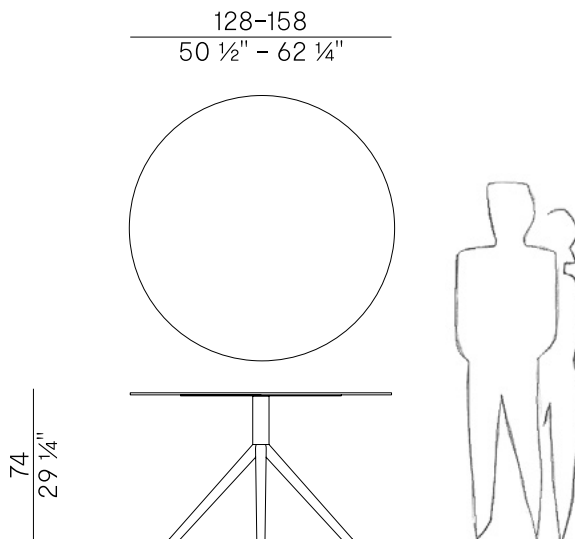
## Informazioni tecniche \ Technical information

Descrizione tecnica \  
Technical description

Tavolo dining con base a 4 razze in metallo verniciato. Piano circolare, in HPL, in due dimensioni.

Dining table with 4-star base in painted metal. Circular top, in HPL, available in two sizes.

Dimensioni \  
Dimensions



Imballaggi \  
Packaging



**PACKAGING - Ø 128**

2 box = m<sup>3</sup> 0.57

gross weight - Kg 37



**PACKAGING - Ø 158**

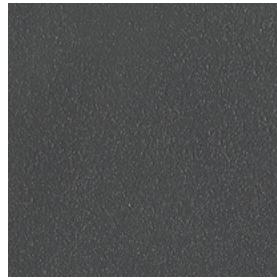
2 box = m<sup>3</sup> 0.65

gross weight - Kg 55

## Finiture \ Finishes

Finiture base \  
Base finishes

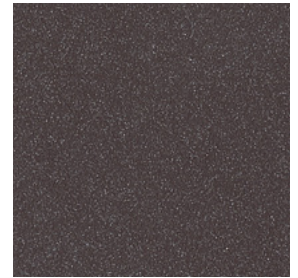
Metallo \ Metal



Verniciato antracite  
goffrato \  
Embossed lacquered  
Anthracite



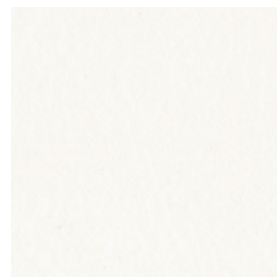
Verniciato bianco  
goffrato \  
White embossed  
lacquered



Verniciato Aval goffrato \  
Embossed lacquered Aval

Finiture piano \  
Top finishes

HPL \ HPL



Bianco \  
White

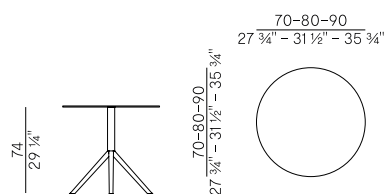


Antracite \  
Anthracite

Collezione outdoor OTX \  
OTX outdoor collection

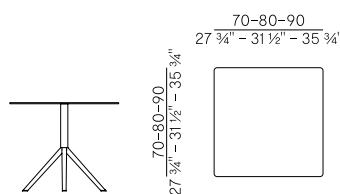
Famiglia di tavoli così composta:  
- Tavoli da bar impilabili con base a 4 razze in tubo d'acciaio verniciato, con piano reclinabile, circolare o quadrato, disponibili in tre altezze e tre dimensioni. Base nelle finiture goffrate antracite, Aval o bianco e top in hpl bianco o antracite. Piedini regolabili.  
- Tavolo da pranzo con piano circolare disponibile in due dimensioni. Base nelle finiture goffrate antracite, Aval o bianco e top in hpl bianco o antracite. Piedini regolabili.

Family of tables composed as follows:  
- Stackable bar tables with 4-star base in painted steel tube, with reclining top, circular or square, available in three heights and three sizes. Base in anthracite, Aval, or white embossed finishes and top in white or anthracite hpl. Adjustable feet.  
- Dining table with circular top available in two sizes. Base in anthracite, Aval, or white embossed finishes and top in white or anthracite hpl. Adjustable feet.



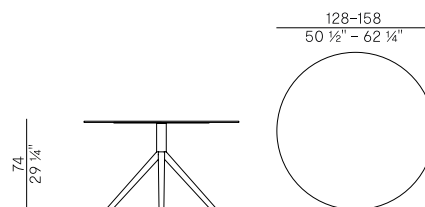
987/TC

tavolo pieghevole impilabile \ folding and stackable table



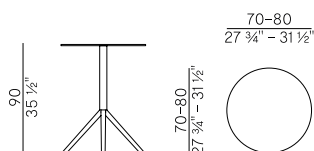
987/TQ

tavolo pieghevole impilabile \ folding and stackable table



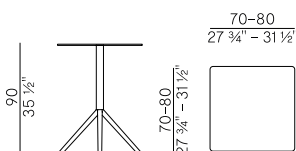
987/TGC

tavolo dining \ dining table



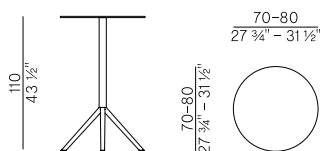
987/TSC

tavolo pieghevole impilabile \ folding and stackable table



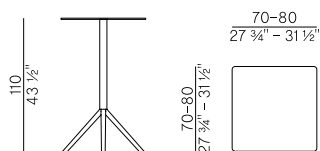
987/TSQ

tavolo pieghevole impilabile \ folding and stackable table



987/TAC

tavolo pieghevole impilabile \ folding and stackable table



987/TAQ

tavolo pieghevole impilabile \ folding and stackable table