

Joi Open Air

Per chi ama la bellezza dei materiali crudi: massello di iroko e cemento prendono vita su Joi Open Air, una collezione di tavoli rettangolari e tavolini quadrati in diverse dimensioni, dalla linea visivamente leggera. Espressamente progettati per un utilizzo esterno, i piani sono in cemento Ductal®, componente di altissima qualità e tecnologia, formato da finissimi componenti minerali naturali e fibre organiche, che lo rendono resistente e flessibile. La sua finitura grigio chiaro rende Joi Open Air perfetto per un palcoscenico contemporaneo e urbano.

For those who love the beauty of raw materials: iroko solid wood and concrete come to life with Joi Open Air, a collection of rectangular tables and square side tables in different sizes, with visually pure lines. Conceived for an external use, the tops are in Ductal® concrete, a component of the highest quality and technology, made up of very fine natural mineral components and organic fibres, which make it resistant and flexible. Its light grey finish makes Joi Open Air perfect for a contemporary and urban stage.

TAVOLO BASSO . LOW TABLE P. 114

PANCA . BENCH P. 92

TAVOLO . TABLE (vol. 2) P. 42

PANCA . BENCH (vol. 1) P. 302

TAVOLO BASSO . LOW TABLE (vol. 1) P. 370





118, 119

JOI OPEN AIR 2017

TECHNICAL DETAILS

IT

- tavoli
- gambe e mensola in massello di iroko
- telaio sottopiano in acciaio AISI 316 verniciato a polvere poliestere elephant
- finitura: iroko con vernice protettiva
- piano in cemento UHPC fibrorinforzato nella finitura grigio chiaro con trattamento protettivo

water proof cover

- cover protettive impermeabili realizzate con tessuto tecnico, su misura per ogni prodotto

EN

- tables
- legs and shelf in solid iroko wood
- top underframe in painted AISI 316 steel with elephant polyester powder coating
- finish: iroko wood with protective varnish
- top in fiber reinforced UHPC concrete in light grey finish with protective treatment

water proof cover

- protective waterproof cover made in technical fabric, customized for each product

DE

- Tische
- Füße und Querstange aus massiv Irokoholz
- Unterplatte aus mit Elefant Polyesterstaub lackiertem Stahl AISI 316
- Ausführung: Irokoholz mit Schutzlack
- Platte aus verstärkter UHPC Zement, Farbe hell grau. Mit Schutzbehandlung

water proof cover

- Schützende wasserdichte Bezüge aus technischen Textilien nach Produktmaß

FR

- tables
- pieds et étagère en iroko massif
- cadre sous-plateau en acier AISI 316 verni en poudre polyester couleur elephant
- finition: iroko avec vernis protecteur
- plateau en béton fibré UHPC couleur gris clair avec traitement protecteur

water proof cover

- housse de protection imperméable en tissu technique hydrofuge, sur mesure pour chaque produit

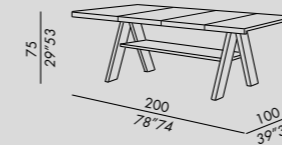
ES

- mesas
- patas y estante en iroko macizo
- marco bajo sobre en acero AISI 316 barnizado en polvo poliéster color elephant
- acabado: iroko con barniz protector
- sobre en cemento UHPC fibra reforzado, color gris claro, con tratamiento protector

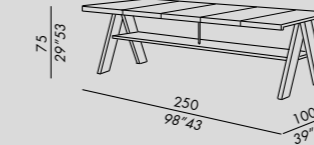
water proof cover

- fundas de protección impermeable en tejido técnico, a medida para cada producto

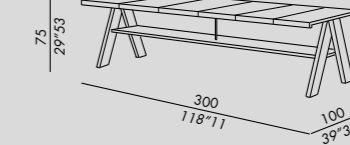
tavolo - table TP-100200



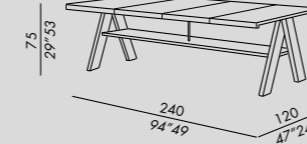
tavolo - table TP-100250



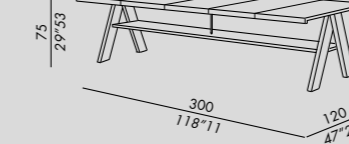
tavolo - table TP-100300



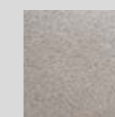
tavolo - table TP-120240



tavolo - table TP-120300

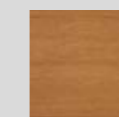


cemento .
concrete



concrete

legno .
wood



iroko

