



Struttura: MDF, spessore 25 mm, assemblata a 45°, laccata lucida color Granito. Base strutturale rinforzata e frontale cassetti in tamburato di MDF.

Finiture:

- frontale cassetti impiallacciati in ebano composto laccato poliestere trasparente brillante; base e struttura interno cassetti impiallacciati in ebano composto laccato opaco.

- base, frontale e struttura interna cassetti in rovere laccato a poro aperto color Moka;

- base, frontale e struttura interna cassetti in rovere fiammato tinto a poro aperto color Tabacco.

Base: lame di metallo, spessore 12 mm, verniciate color Peltro con finitura lucida anti-touch.

Scivolante protettivo in gomma morbida antigraffio.

Structure: MDF, 25 mm thick, 45° assembly joints, glossy lacquered in the colour Granite. Reinforced base and drawer's fronts are made of honeycomb MDF.

Finishes:

- drawer fronts in composite ebony veneer with glossy transparent polyester lacquer; base and internal drawer structure in composite ebony veneer with matt finish;

- base, internal drawer structure and drawer fronts in oak veneer with open pore Moka lacquer;

- base, internal drawer structure and drawer fronts in flamed oak veneer with open pore Tobacco stain.

Base: metal blades, 12 mm thick, in Pewter colour finish with polished anti-fingerprint finish. Protective soft, non-scratch rubber slide.

Struktur: MDF, 25 mm Stärke, im 45° Winkel zusammengefügt, hochglänzend granitfarbig lackiert.

Verstärkte Strukturbasis und Frontteil der Schubladen aus MDF-Wabenpanel.

Ausführungen:

- Frontteil der Schubladen aus Ebenholzkomposit-Furnier, transparent, hochglänzend polyesterlackiert; Gestellbasis und interne Schublade mit matt lackiertem Ebenholzkomposit furniert.

- Gestellbasis, interne Schublade und Frontteil der Schubladen aus mokkafarbig, offenporig lackiertem Eiche-Furnier.

- Gestellbasis, interne Schublade und Frontteil der Schubladen aus geflammtem Eiche-Furnier, offenporig, tabakfarbig getönt.

Basis: Metallplatten, 12 mm Stärke, zinnfarbig lackiert mit hochglänzendem Anti-Touch-Finish. Gleitschutz aus weichem, kratzsicherem Gummi.

Structur : MDF, épaisseur 25 mm, assemblée à 45°, laqué brillant couleur Granit.

Base de la structure renforcée et façade des tiroirs en nid d'abeille MDF.

Finitions :

- façade des tiroirs plaqué en bois composite ébène laqué polyester transparent brillant ; base et tiroirs internes plaqués en bois composite ébène laqué mat ;

- base, tiroirs internes et façade des tiroirs plaqué en chêne rouvre laqué à pores ouverts couleur Moka ;

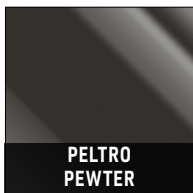
- base, tiroirs internes et façade des tiroirs plaqués en chêne rouvre flamboyant teint à pores ouverts couleur Tabac.

Base : lames en métal, épaisseur 12 mm, laquées couleur Étain finition brillante anti-trace.

Patins de protection en gomme souple anti-rayure.

**BASI
BASES**

**METALLO LUCIDO
POLISHED METAL**



PELTRO
PEWTER

**STRUTTURA
STRUCTURE**

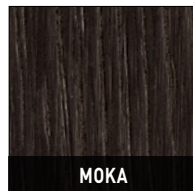
**LACCATO LUCIDO
GLOSSY LACQUERED**



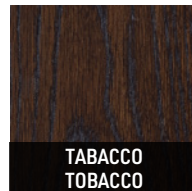
GRANITO
GRANITE

**FRONTALE E INTERNO CASSETTI
FRONT AND INTERNAL DRAWERS**

**ROVERE
OAK**



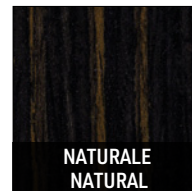
MOKA



TABACCO
TOBACCO

**FRONTALE CASSETTI
FRONT DRAWERS**

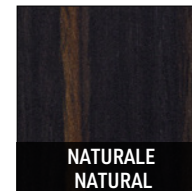
**EBANO LUCIDO
GLOSSY EBONY**



NATURALE
NATURAL

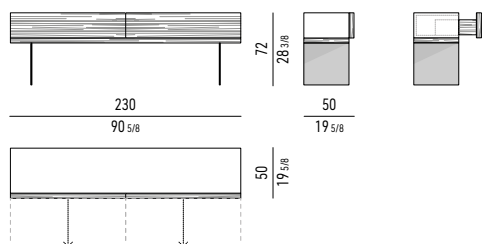
**INTERNO CASSETTI CASSETTI
INTERNAL DRAWERS**

**EBANO OPACO
MATT EBONY**



NATURALE
NATURAL

CONSOLLE "HIGH" "HIGH" CONSOLE TABLE



Nr. 2 cassetti che scorrono su guide a estrazione totale con apertura push and pull.

Portata massima Kg 40.

Spazio utile interno cassetti:

cm 107x38 H13

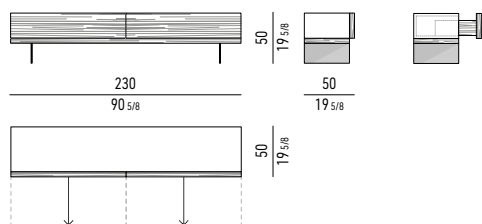
Nr. 2 drawers that glide on fully extractable guides with push and pull opening.

Maximum load 40 Kg.

Drawers internal dimension:

cm 107x38 H13

CONSOLLE "LOW" "LOW" CONSOLE TABLE



Nr. 2 cassetti che scorrono su guide a estrazione totale con apertura push and pull.

Portata massima Kg 40.

Spazio utile interno cassetti:

cm 107x38 H13

Nr. 2 drawers that glide on fully extractable guides with push and pull opening.

Maximum load 40 Kg.

Drawers internal dimension:

cm 107x38 H13