

## Hamptons low tables

by Ramón Esteve

Hamptons, the **new collection of designer outdoor furniture** consists of a set of pieces where a careful selection of fabrics and patterns evoke that “lifestyle” where elegance is perceived in the finest details.



## Info

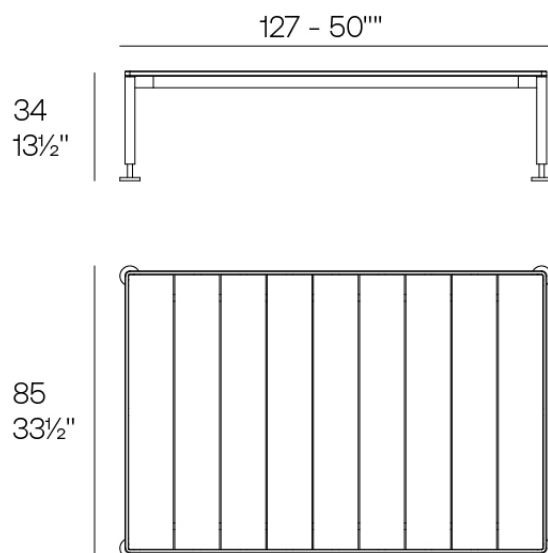
---

### Description

The low table in the collection stands out for its aluminium structure, which makes it lightweight and sturdy, ideal for outdoor use. The surface is made of HPL sheets, a durable and easy to maintain material.

The polished aluminium legs add a touch of elegance and shine. Available in a wide variety of colours for both the aluminium frame and the HPL surface.

Weight: 34.74 Kg



HAMPTONS Mesa Baja 127x85x33 1/2  
HAMPTONS Low Table 50"x33 1/2"x13 1/2"

## Finishes

---

### finishes

---

#### ALUMINIUM

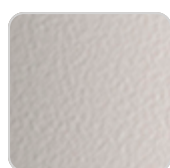
Ref. 54810



white



smoked



ecru



tortora



cream



garnet



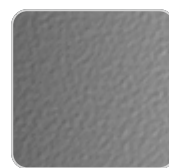
brown



green



blue



gray



anthracite



black

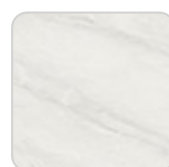
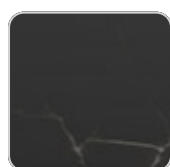
Lacquered aluminium profile.

### tabletops

---

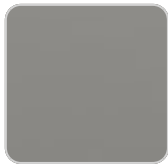
#### Solid Core

Ref. 54810CEN



# VONDOM

ecru stone



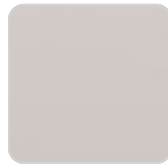
smoked

tortora stone



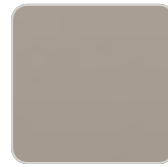
white (white edge)

black stone



ecru

gray stone



tortora

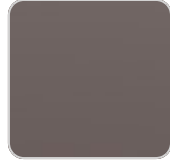
white stone



cream



garnet



brown



green



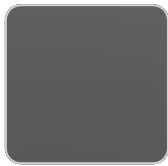
blue



anthracite

## HPL

Ref. 54810CEN

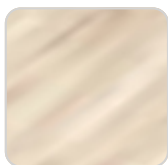


black(black edge)

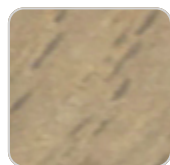
## HPL black edge

## Solid Core wood

Ref. 54810CEN



oak1



oak2



## Ambients

---

