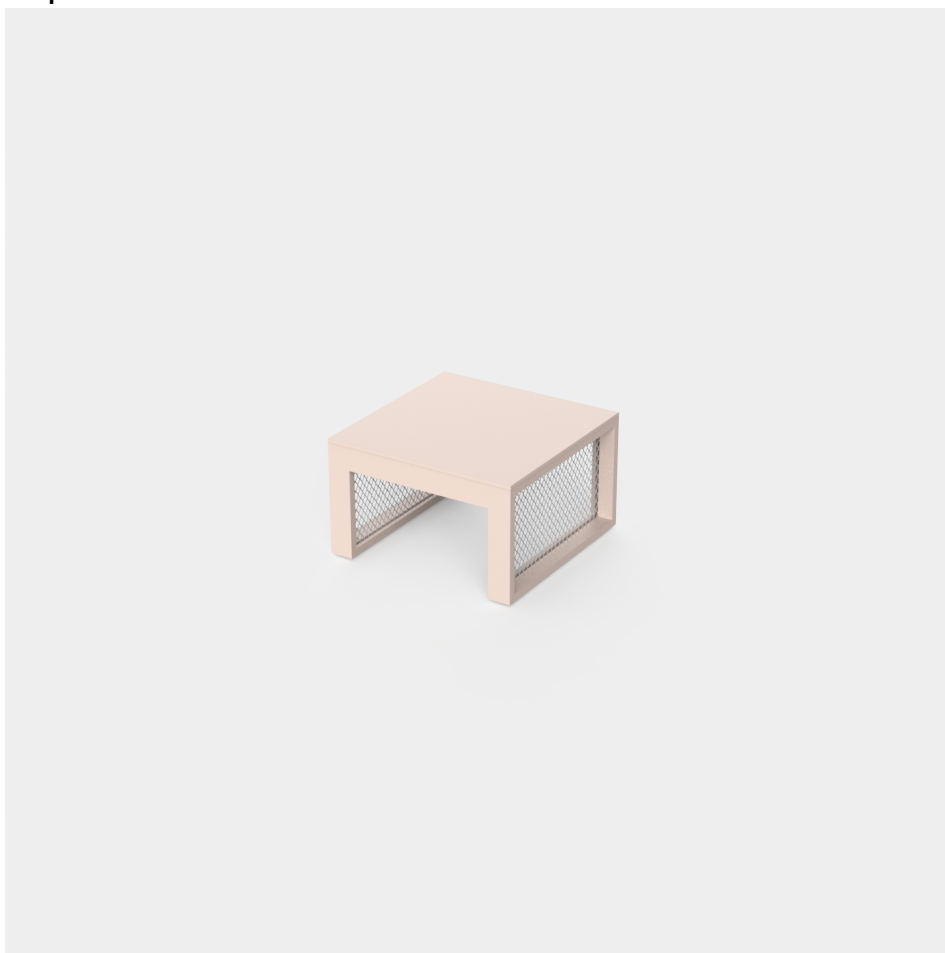


The factory table sun lounger

by Ramón Esteve

Vondom's The Factory collection, designed by Ramón Esteve, is inspired by the cast-iron architecture of New York. This collection combines an industrial aesthetic with modern comfort, offering a selection of furniture that brings character and sophistication to any outdoor space.

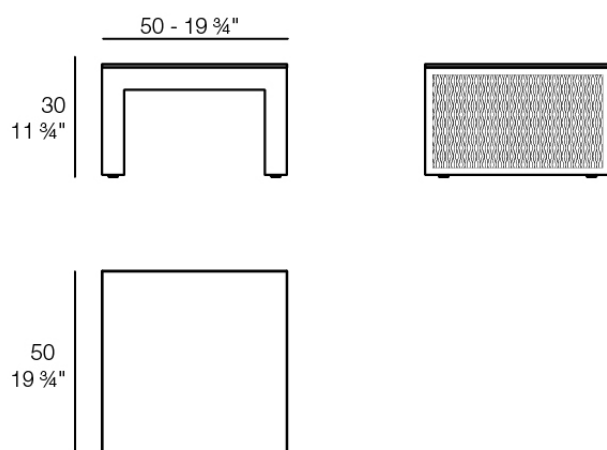


Info

Description

Composing of an aluminum profile and deployed mesh, all materials and components are resistant to extreme weather conditions. Available in different finishes.

Weight: 5.74 Kg



THE FACTORY Mesa Tumbona
THE FACTORY Table Sun Lounger

Finishes

finishes

ALUMINIUM

Ref. 54623



white



smoked



ecru



tortora



cream



garnet



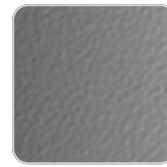
brown



green



blue



gray



anthracite



black

Lacquered aluminium profile.

tabletops

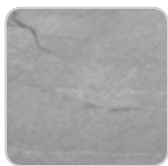
Solid Core

Ref. 54623TBL



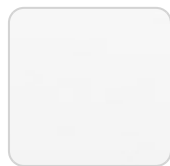
VONDOM

white stone



gray stone

ecru stone



white (white edge)

tortora stone



ecru

black stone



tortora

smoked



cream



garnet



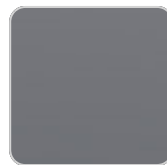
brown



green



blue



anthracite

Ambients



