

## Vineyard large coffee table legs

by Ramón Esteve

The Vineyard collection, designed by Ramón Esteve, captures the essence of Mediterranean style, combining elegance and comfort in each of its pieces. Inspired by vineyards and outdoor living, this collection is perfect for creating relaxed and welcoming environments.

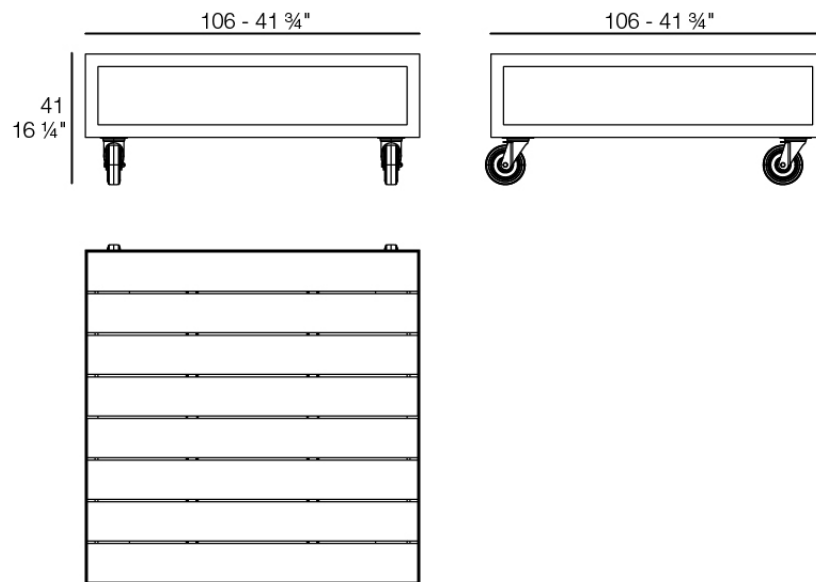


## Info

---

### Description

Weight: 43 Kg



VINEYARD Mesa L  
VINEYARD Table L

## Finishes

---

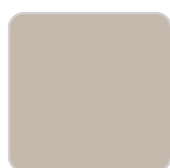
### finishes

---

ALUMINIUM  
Ref. 54503ZSU



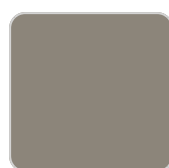
white



ecru



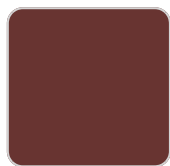
smoked



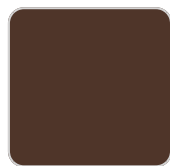
tortora



cream



garnet



brown



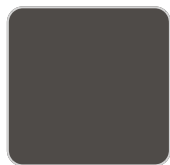
green



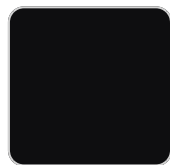
blue



gray



anthracite

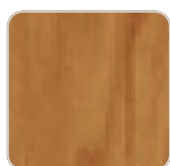


black

### panel/top

---

Teak  
Ref. 54503AA



natural teak



weathered teak

## Ambients

---

