

Jut chill ottoman 40x40x45

by Studio Vondom

Jut is a line of furniture for outdoors that captures the essence of style and comfort with a touch of freshness. Launched at our inception, Jut not only marked the beginning of our adventure, but remains an icon of minimalist design and functionality.

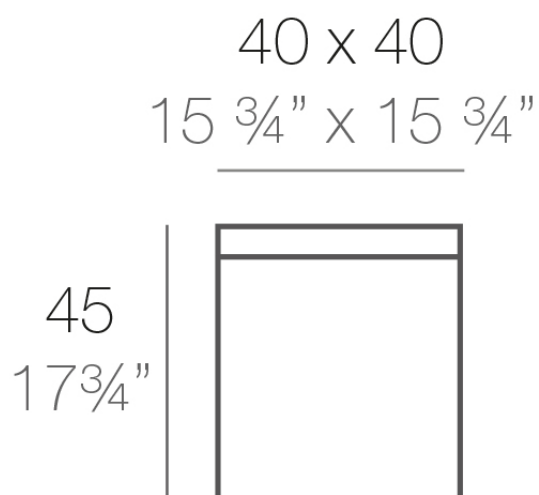


Info

Description

Made of polyethylene resin by rotational moulding. 100% Recyclable. Item suitable for indoor and outdoor use. Available in different finishes.

Weight: 5.5 Kg



QUADRAT Puff 40 x 40

QUADRAT Ottoman

15 ³/₄" x 15 ³/₄"

Finishes

finishes

BASIC

Ref. 44416



white 2001



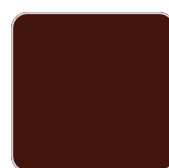
ecru 2003



tortora 2004



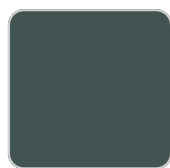
cream 2017



garnet 2015



brown 2008



green 2016



blue 2018



gray 2005



anthracite 2006



black 2002



ice 2101

Matt Polyethylene

LACQUERED

Ref. 44416F



white 3101



ecru 3103



tortora 3104



cream 3117



garnet 3113



brown 3125



green 3116



blue 3118



gray 3105



anthracite 3106



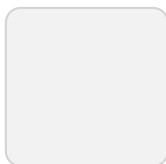
black 3102

Lacquered Polyethylene

lighting

RGBW LED BATTERY

Ref. 44416Y

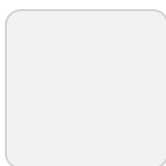


ice 2101

Unit with internal lighting with battery-powered RGBW LED technology. Includes charger and remote control for switching colors and charger. Available only in matte ice white finish.

RGBW LED DMX BATTERY

Ref. 44416DY



ice 2101

Unit with internal lighting with RGBW LED technology and remote control unit for

VONDOM

switching colors. Also controlled by DMX-1024 (wireless), enabling communication between one or more products simultaneously via the DMX transmitter (not included). There are two options to choose from: Professional XLR DMX and Home WIFI DMX. (Remote control included).

fabric

BAIONA Ref. 53027CO



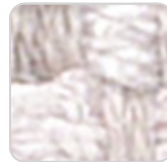
green 10110



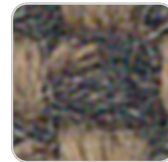
ecru 10101



jade 10109



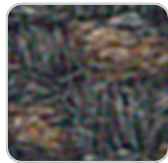
white 10100



brown 10108



garnet 10107



anthracite 10114



clay 10106



gray 10113



camel 10104



blue 10112



cream 10103



ocean 10111



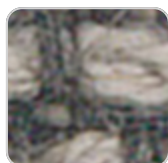
tortora 10102

High density 100% acrylic fabric, which provides a solid feel. It has an irregular pattern that adds a handcrafted touch.

CALELLA Ref. 53027CO



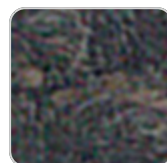
cream 10123



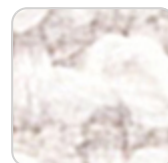
tortora 10122



ecru 10121



anthracite 10129



white 10120

VONDOM



gray 10128



blue 10127



jade 10126



clay 10125



mustard 10124

PFAS-free 100% acrylic fabric with a rich and unusual texture and an exceptional softness, which enhances the comfort of the furniture.

FISTERRA

Ref. 53027CO



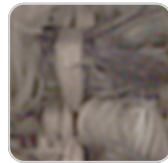
cream 10132



white 10130



ecru 10131



tortora 10135



camel 10134



peach 10146



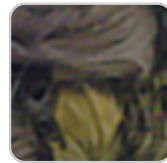
clay 10137



garnet 10138



brown 10136



olive 10145



jade 10139



green 10140



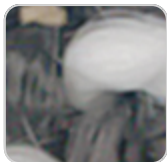
ocean 10141



blue 10142



gray 10143



anthracite 10144



black 10147

100% acrylic fabric, with a distinctive irregular marbled pattern and a soft feel.

PORTONOVO

Ref. 53027CO

VONDOM



ecru 10151



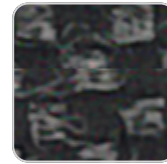
jade 10159



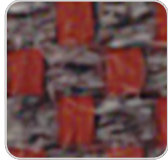
brown 10158



white 10150



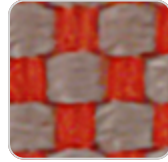
black 10165



garnet 10157



anthracite 10164



clay 10156



gray 10163



mustard 10155



blue 10162



camel 10154



cream 10153



ocean 10161



tortora 10152

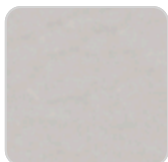


green 10160

100% acrylic fabric, with a flat and simple design, which adapts to any decorative style.

ALTEA

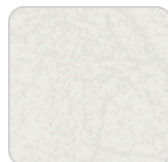
Ref. 53027CO



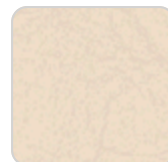
tortora 1102



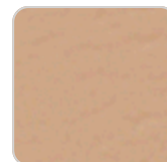
white 1100



ecru 1111



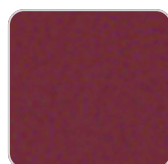
cream 1103



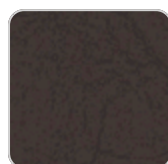
camel 1120



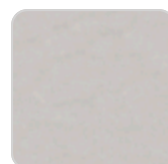
clay 1122



garnet 1106



brown 1104



jade 1125



ocean 1123

VONDOM



blue 1114



gray 1101



anthracite 1124



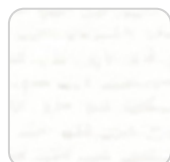
black 1105

Soft outdoor fabric with leather-like texture.

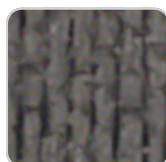
AROUSA Ref. 53027CO



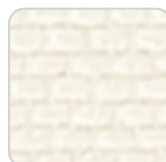
ecru 1221



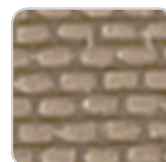
white 1219



tortora 1209



cream 1220



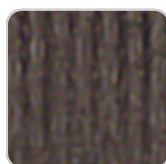
camel 1230



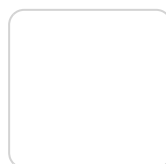
clay 1231



garnet 1223



brown 1214



jade 1235



blue 1222



gray 1208



anthracite 1210

Soft outdoor fabric with shiny finish.

Ambients

